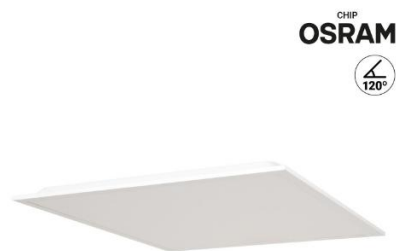
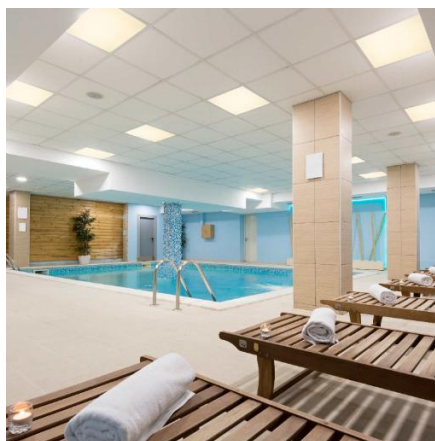




**40W**  
LED  
IP65



CHIP  
**OSRAM**  
120°

## Recessed LED Panel Backlight 60x60cm - 40W - IP65 - 4000K - 120lm/W

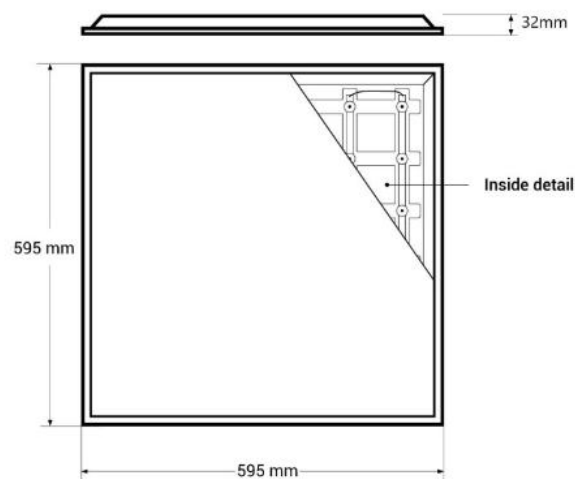
Ref. B5235-BACKLIT-IP65-BN

The 40W Backlight LED panel features backlight or backlit technology, which provides high-efficiency, uniform illumination with minimal glare. High efficiency (120lm/W) and suitable for wet or outdoor environments (IP65). Neutral white shade (4000K). \*\*Warranty 5 years\*\*



### Product data


High	32mm
Width	23.43 inches
Beam angle (°)	120
Certs	CE, ROHS
Energy efficiency class	E
CRI	80-85
LED Panel Dimensions	60x60
Driver	External
Efficiency (Lm/w)	120
Frequency (Hz)	50 - 60
Warranty	5 years
IP	IP65
Kelvin (K)	4000
Long	23.43 inches
Assembly	Recessed, Suspension
Orientable	No
Power (W)	40
Sensor	No
LED Technology	BACKLIT - BACKLIGHT
Nominal Voltage (V)	220 - 240 V AC
Key	Neutral white
Recommended Use	Hotels, Commerce, Parking, Terraces, Balconies, Bathrooms



Service life (h)

25,000

Product variants

Reference	Attributes
B5235-BACKLIT-IP65-BN	<div></div>