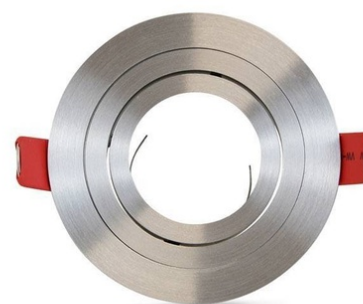




## PREMIUM tilting circular downlight ring for LED GU10 bulb


Recessed round trim of PREMIUM quality for GU10 / MR16 LED dichroic bulb with a diameter of 50mm. Adjustable / tiltable, to focus on desired areas. Made of aluminum. Easy installation \* LED bulb not included \* For GU10 / MR16 Ø50mm Ø92mm exterior Ø82mm cut IP20



### Product data

Housing color	White (use), Aluminum (use), Black Mate (use)
Cap	GU5.3, GU10
Certs	CE, ROHS
Dimensions (mm) LxWxH	Ø92
Cutting dimensions (mm)	Ø82
Frequency of Use	Intensive
Guarantee	According to legal warranty: 3 years
IP	IP20
Material	Aluminum
Assembly	Recessed
Orientable	Yes
Temperature range	-20°F ~ +40°F
Outdoor Use	No

Product variants

Reference	Attributes	
B962-AL	Housing color: Aluminum (use)	
B962-B	Housing color: White (use)	