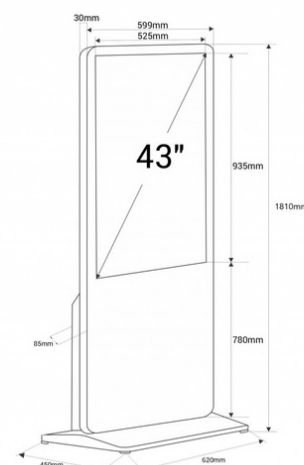
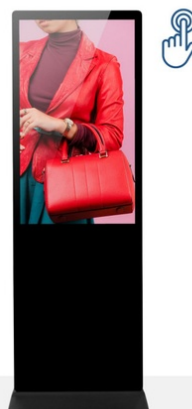




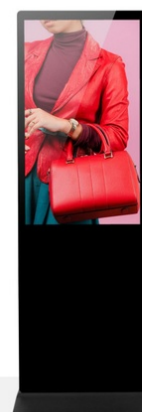
43"
INDOOR



Indoor advertising totem - Full HD 43" LCD - Touch / Non touch screen - Android

43" Indoor Advertising Totem available in touch and non-touch versions. Features a simple and elegant design, made with durable materials and high-quality finishes. Reproduce images in high definition, ensuring great visibility and visual impact. Its setup is very simple as it has an Android operating system. The content can be projected via USB or online through software. This versatile digital signage solution will attract customers in shopping malls, stores, or restaurants, capturing their attention and increasing sales. Product subject to special shipping conditions in the peninsula and Balearic Islands: +100€ +VAT shipping costs - No additional discounts or coupons apply

43"
INDOOR



Product data

Use (DO NOT USE)	Touch (use), Non-touch (use)
Storage	32GB
Speakers	2 X 5W
Audio	MP3, M4A, WAV, WMA
Certs	CE, ROHS
Colors	16.7 million
Connectivity	Bluetooth 4.2, HDMI INPUT, RJ45 (Ethernet), USB, Wi-Fi (2.4 GHz), Wi-Fi (802.11b/g/n), Ethernet 100Mbps, Ethernet
Frequency (Hz)	1.9GHz
Frequency of Use	Intensive
Warranty	According to legal warranty: 3 years
GPU	Mali-G31 / Four cores
Images	JPG, BMP, PNG
IP	IP20
Brightness	350 cd/m ²
Inches	43 inches
RAM	4GB

Temperature range	-20°F~70°F
Renting	Yes
Resolution	1920 x 1080
Operating system	Android 9
Touch	No, Yes, Capacitive
Nominal Voltage (V)	220 - 240 V AC
Response time	8 ms
Display Type	LCD
Outdoor Use	No
Video	MPEG4, WMV, VP8
CPU	T972 - Cuatro núcleos

Product variants

Reference	Attributes	
DLS43-V2-4+32	Use (DO NOT USE): Non-touch (use)	
DLS43-V2-4+32-T	Use (DO NOT USE): Touch (use)	