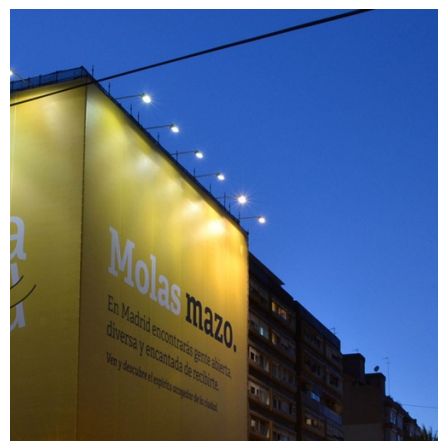


Outdoor LED floodlight - 200W CCT - "PRO" Series - 110lm/W - IP66

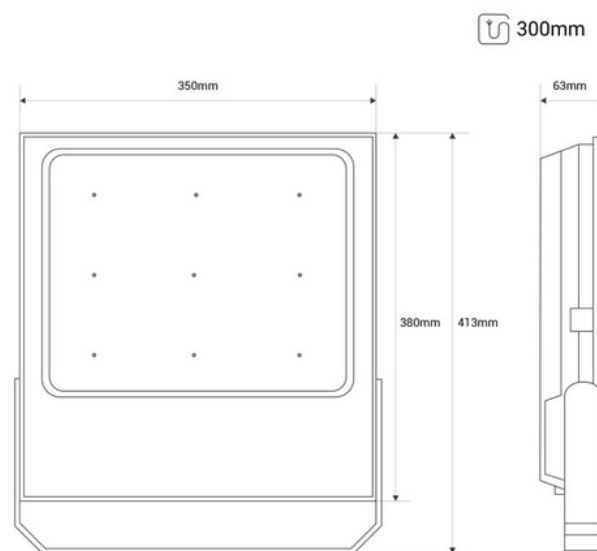
Ref. B1850-200W-N

200W "Pro" series LED projector, high efficiency (110lm/W), perfect for demanding environments. Metal casing with excellent heat dissipation and glass diffuser. With anti-humidity valve, preventing internal condensation. Orientable, and suitable for outdoor use (IP66). Adjustable CCT system: warm white (3000K), neutral white (4000K), and cool white (5000K).



Product data

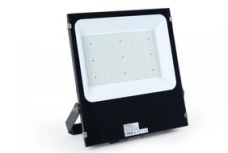
Opening angle (°)	120
Certs	CE, ROHS
Energy efficiency class	E
Dimensions (mm) LxWxH	350 x 413 x 63
Dimmable	No
Efficiency (Lm/w)	110
Projector Range	Pro Series
Guarantee	5 years
IP	IP66
Kelvin (K)	3000, 4000, 5000
Lumens (Lm)	WW (15900lm) - NW (19612lm) - CW (19183lm)
Material	Metal
Material diffuser	Crystal
Assembly	Surface
Orientable	Yes
Power (W)	200
Sensor	No
Nominal Voltage (V)	200 - 265V
Key	CCT
Outdoor Use	If
Recommended Use	Garden, Industry, Parking, Industrial Warehouses
Service life (h)	50000



Product variants

Reference

Attributes



B1850-200W-N