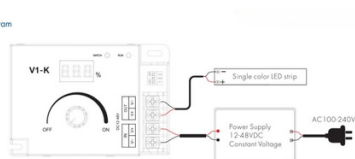
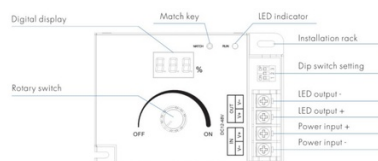




Wiring Diagram



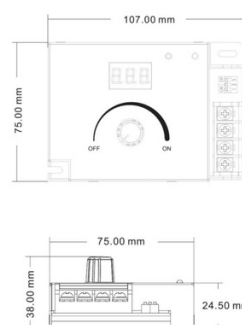
Mechanical Structures and Installations



PMW Manual dimmer 12-48V DC - 20A - RF 2.4GHz - Adjustable frequency and dimming curve - Skydance

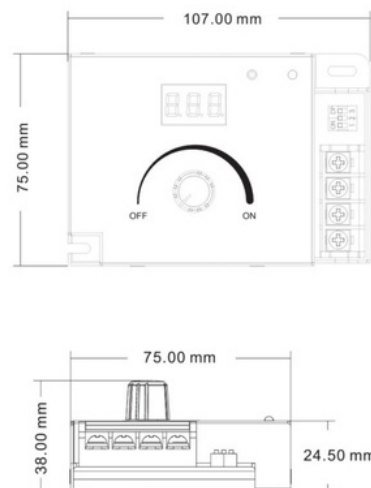
Ref. SK-V1-K

Manual knob dimmer "Skydance" for monochrome LED lighting of 12-48V DC, with 1 channel output. Allows the variation of PWM frequency between: 500Hz, 2kHz, 8kHz, or 16kHz and selection of linear or logarithmic regulation curve. Incorporate a digital display to visualize the adjustment parameters. Offers a smooth dimming of 0 to 100% without flickering and is compatible with monochrome RF 2.4G "Skydance" remote controls. Depending on the selected frequency, the manual regulator will allow a maximum current step of 20A. IN/OUT: 12/48V Max. 20A Monochrome 1 channel IP20



Product data

Certs	CE, ROHS
Dimensions (mm) LxWxH	107 X 75 X 38
Warranty	5 years
IP	IP20
Temperature range	-30°F ~ +55°F
Control system	0-10V
Nominal Voltage (V)	12-48VDC
Outdoor Use	No



Product variants

Reference

Attributes



SK-V1-K