

### Features

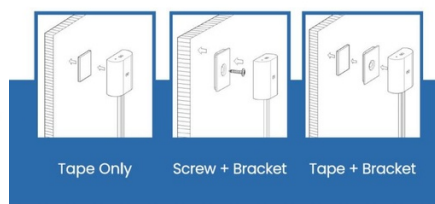


**Dual Side Sense**  
Dual Sensor design make mounting more flexible for different position

**Direction Shift**  
The button allow user to shut off the sensor of each direction.



### Installation Method



## Dual proximity sensor for On/Off and dimming of LED strips - 5-24V DC

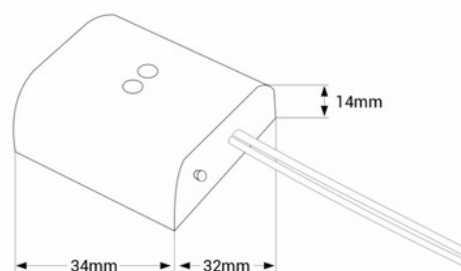
Ref. DMSC-H-20ABB

Dual proximity sensor for single color LED strips from 5 to 24V DC. Controls on/off and intensity when a hand is passed within a distance of 8 cm or less. It incorporates two high-sensitivity sensors for control from two different angles, according to installation needs. It has 3 possible fastening modes.



### Product data

Certs	CE, ROHS
Dimensions (mm) LxWxH	32 x 34 x 14
Warranty	According to legal warranty: 3 years
Maximum intensity (A)	5
Material	Polycarbonate
Sensor	Yes
Nominal Voltage (V)	5-24V



## Product variants

Reference

Attributes



DMSC-H-20ABB