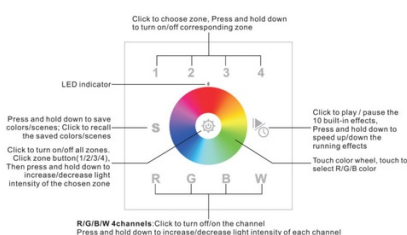
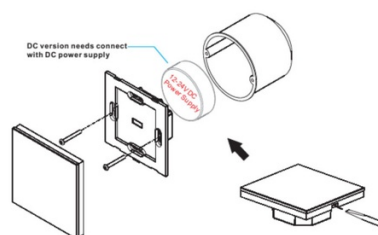




Function Introduction



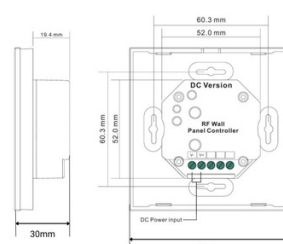
Installation



RGBW dimmable RF 12-24V-DC recessed touch mechanism for 4 zone LED lighting - SUNRICHER Perfect RF

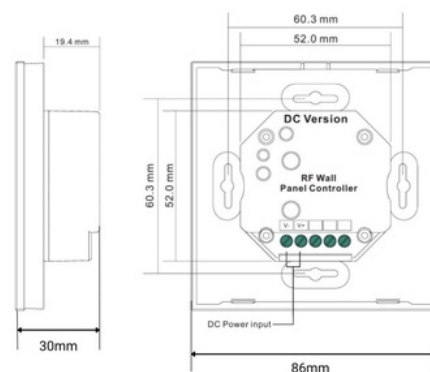
Ref. SR-2820-DC

The BUILT-IN RGBW TOUCH MECHANISM is a controller that features an ultra-sensitive touch glass panel. It has a color wheel drawn on it, allowing for precise, easy, and quick adjustments of any color tone. We recommend its use with the following Receivers: - Regular RGB products 220V: RGB Receiver 240V via RF (Ref. D1009HT) [1] - Regular products 12-24V: RGBW Receiver 12-36V RF (Ref. D1009FA) [2] [1] <https://www.barcelonaed.com/regulacion-rgb-led/1377-controlador-rgb-240v-3-canales-receptor-rf-dmx.html> [2] <https://www.barcelonaed.com/regulacion-rgb/1231-controlador-rgbw-pwm-12-36v.html>



Product data

Certs	CE, ROHS
Energy efficiency class	F
Connectivity	Radiofrequency
Color control	RGBW
Dimensions (mm) LxWxH	86 x 86 x 30
Frequency of Use	Intensive
Guarantee	5 years
IP	IP20
Material	Plastic
Assembly	Recessed
Detection range (m)	25,000
Temperature range	0 ~ +40°F
Nominal Voltage (V)	12-24V DC
Outdoor Use	No
Service life (h)	<n_generated_text>35000</n_generated_text>



Product variants

Reference

Attributes

SR-2820-DC

