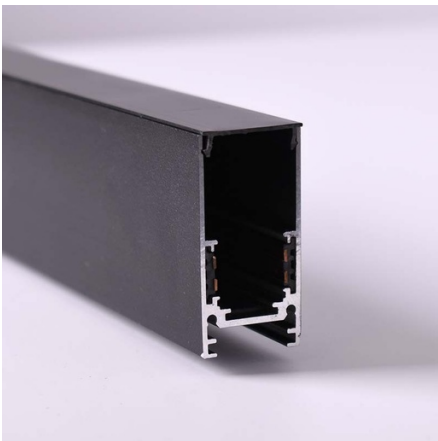


Magnetic rail 20mm surface mounted 48V - 2 meters

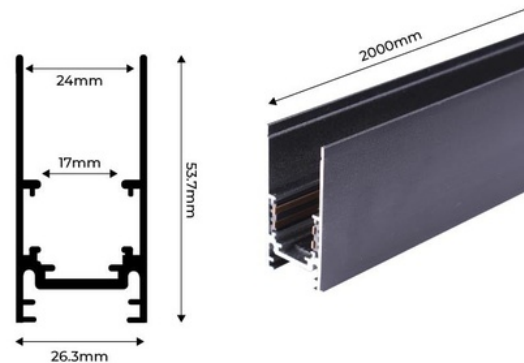
Our 20 mm surface magnetic rail is made of high-quality aluminum and is available in white and black. It allows for the easy placement of magnetic LED lights according to the needs of each project. It offers numerous configuration options and can be installed on both ceilings and drywall walls, posing no risk to users as it operates at low voltage (48V). It allows for surface mounting and also suspension, by adding the suspension kit. **Includes a plastic cover to cover the free surface between fixtures and two end plugs**



Product data

Housing color	White (use), Black (use)
Certs	CE, ROHS
Dimensions (mm) LxWxH	2000 x 26.3 x 53.7
Guarantee	3 years
IP	IP20
Material	Aluminum
Assembly	Surface, Suspension
Nominal Voltage (V)	48V
Track Type	Magnetic
Outdoor Use	No

↗ 2M



Product variants

Reference	Attributes	
CMS-200-B	Housing color: White (use)	
CMS-200-N	Housing color: Black (use)	