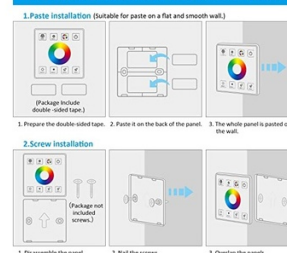


## RGB controller for LED strips with RF touch panel - 5-24V/DC

Ref. RF86-03

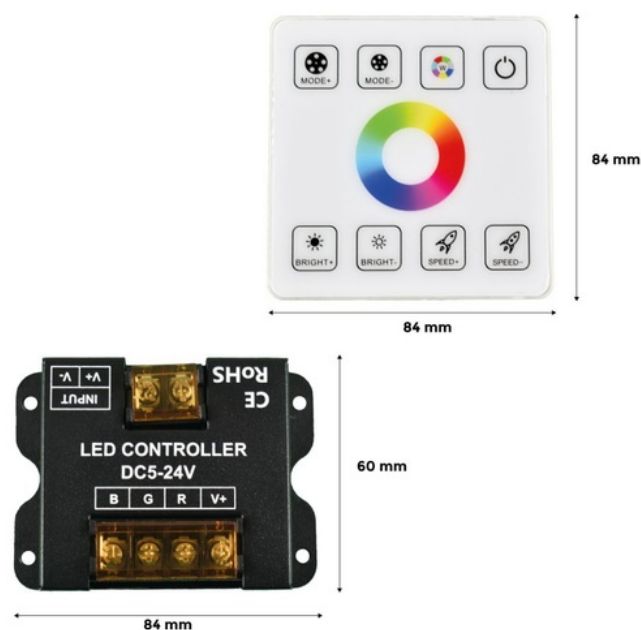
The RGB controller for LED strips allows you to control the lighting of the LED strips using a soft, high-sensitivity touch panel. Additionally, it saves the user's settings and can be easily installed on the wall using two adhesive strips (included), or by using two screws (not included). Compatible with most LED strips on the market. Maximum range: 15 m. Ideal for creating environments with personalized lighting in a simple way \*\* Includes a controller, a touch panel, 2 adhesive strips, and a manual \*\*

### TWO INSTALLATION METHODS ARE AVAILABLE.



### Product data

Certs	CE, ROHS
Connectivity	RF
Color control	RGB
Dimensions (mm) LxWxH	Controller: 85 x 60 x 20 mm. Panel: 84 x 84 x 10 mm
Warranty	According to legal warranty: 3 years
Maximum intensity (A)	30
IP	IP20
Material	Aluminum, Plastic
Number of channels	3
Weight (g)	170
Detection range (m)	15
Temperature range	-20°F to +60°F
Nominal Voltage (V)	5-24V
Outdoor Use	No



Product variants

Reference	Attributes
RF86-03	