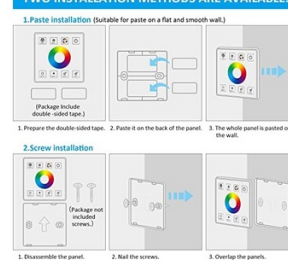


#### TWO INSTALLATION METHODS ARE AVAILABLE.



## RGBW controller for LED strips with RF touch panel - 5-24V/DC

Ref. RF86-04

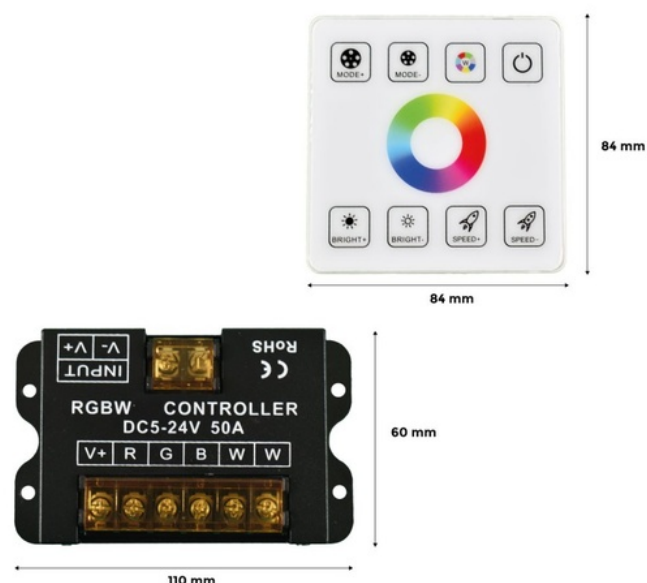
The RGBW controller for LED strips allows you to control the lighting of the LED strips through a soft and highly sensitive touch panel. In addition, it saves the user's settings and can be easily installed on the wall using two adhesive strips (included), or by using two screws (not included). Compatible with most RGBW LED strips on the market. Maximum range: 15 m. Ideal for creating environments with personalized lighting and convenient control.

\*\* Includes one controller, one touch panel, 2 adhesive strips, and a manual\*\*



### Product data

Certs	CE, ROHS
Connectivity	RF
Color control	RGBW
Warranty	According to legal warranty: 3 years
Maximum intensity (A)	50
IP	IP20
Material	Aluminum, Plastic
Number of channels	5
Weight (g)	180
Temperature range	-20°F to +60°F
Nominal Voltage (V)	5-24V
Outdoor Use	No



Product variants

Reference	Attributes
RF86-04	