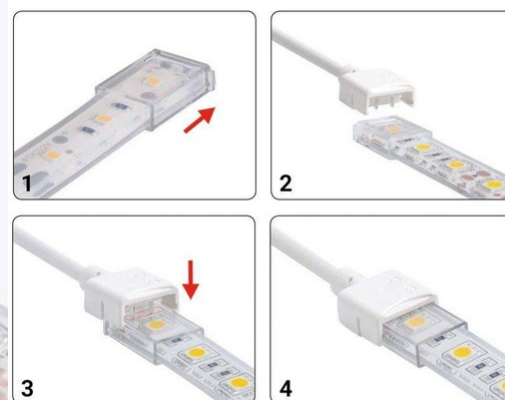


RGB 10mm



## Connector start strip to cable RGB PCB 10mm IP68

Ref. SDN10XB-4W200

Hippo Connector for RGB strip to cable for RGB LED Strips. The strip-to-cable starter connector allows for the connection and disconnection of RGB LED strips to the corresponding controller or power source. It quickly and easily connects sections of RGB LED strips. RGB strip 10mm wide. Connector from strip to power. Totally waterproof, protection grade IP68. With a total length of 200mm. 4 Pin. 5A. 3/24V-DC. Suitable for outdoor and indoor use, for individuals and professionals.

### Product data

Track width (mm)	10
Certs	CE, ROHS
Dimensions (mm) LxWxH	28x17.5x8.5
Frequency of Use	Intensive
Guarantee	According to legal warranty: 3 years
Maximum intensity (A)	5
IP	IP68
Material	PC; ABS; PVC
Temperature range	-20°F ~ +40°F
Control system	RGB
Nominal Voltage (V)	12/24V-DC
Outdoor Use	If

Product variants

Reference

Attributes

RGB 10mm



SDN10XB-4W200