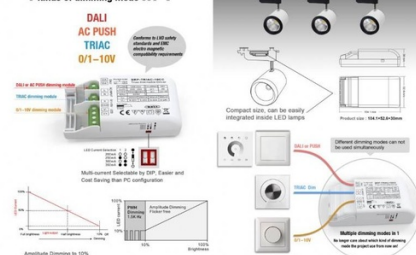




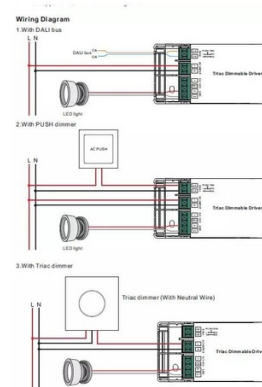
4 kinds of dimming mode in 1



copy of

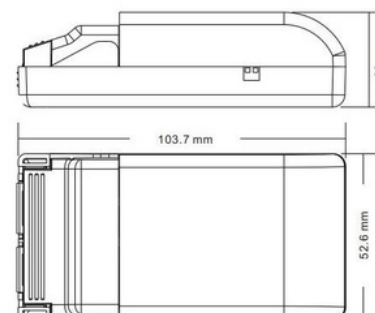
Ref. SRP-TRIAC-10CC

The SRP-TRIAC-10CC is a dimmable LED driver 4 in 1: TRIAC, DALI, PUSH, and 0/1-10V, allowing it to work with different control systems. Dimmable TRIAC LED driver of 10W, with a constant current output of 1 channel and adjustable current from 200mA to 350mA through DIP switches. Designed with an input of 200-240V-AC. The LED driver adopts an amplitude dimming output. It allows for smooth and deep regulation down to 1% without flickering or buzzing. 1 DALI address can be automatically assigned by DALI masters. It is compatible with universal dimmers 0/1-10V.



Product data

Certs	CE, ROHS
Warranty	5 years
Control system	DALI



Product variants

Reference

Attributes



SRP-TRIAC-10CC