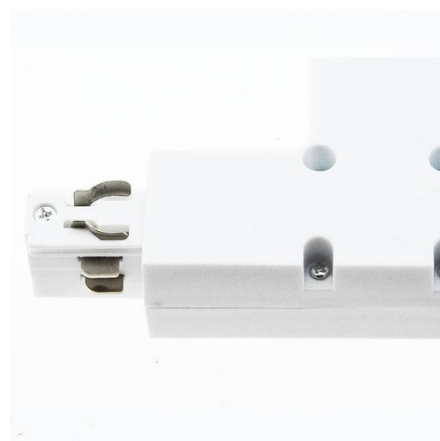




Rigid tee for surface mounted three-phase rail - LEFT

LEFT Union in "T" for surface three-phase tracks. Designed to connect three sections of three-phase track at 90° angles, providing a precise and functional installation. Available in black and white.



Product data

Case color	White (use), Black (use)
Certs	CE, ROHS
IP	IP20
Material	Aluminum, Plastic
Track Type	Three-phase



Product variants

Reference	Attributes	
BTT-GB04-I-B	Case color : White (use)	
BTT-GB04-I-N	Case color : Black (use)	