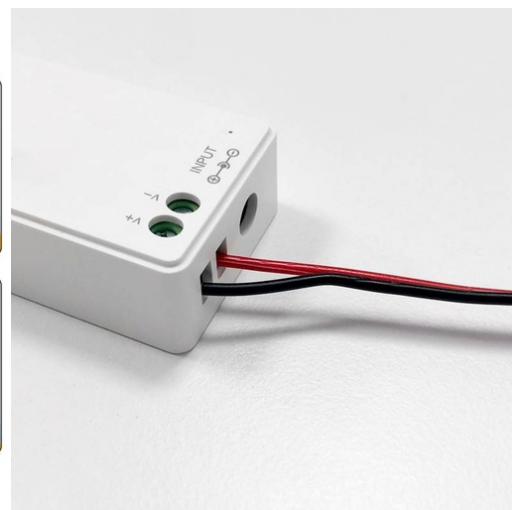
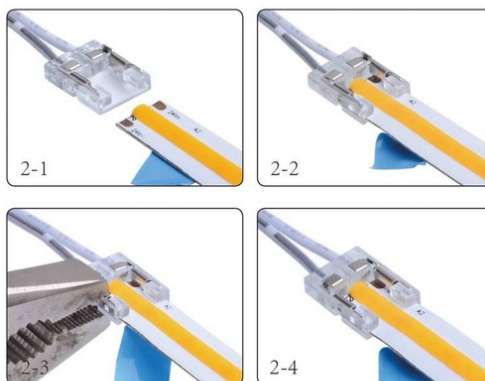


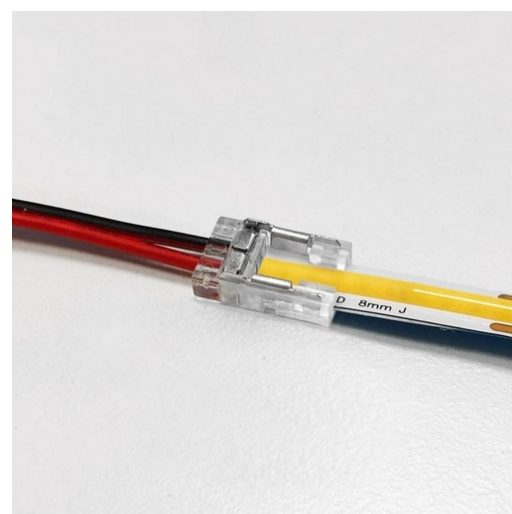
10mm



Start connector for profile and single-color COB LED strip - 10mm

Ref. BCI10XB-2W

Quick start single-color connector cable for 10mm single-color COB LED strips. The cable is perfect for connecting strips and profiles with controllers, power, etc. It allows for easy and quick use of the cut sections of single-color COB LED strips without the need for soldering. Exclusive use for interiors with IP20 protection grade. 3/24V-DC. 3.5A. 8mm. Profile or strip current connector. Black-Red central cable with a length of 150mm. 2 Pin.



Product data

Track width (mm)	10
Certs	CE, ROHS
Dimensions (mm) LxWxH	15.6 x 9.6 x 3.3
Frequency of Use	Intensive
Guarantee	According to legal warranty: 3 years
IP	IP20
Material	Polycarbonate
Temperature range	-20°F ~ +40°F
Control system	Monochrome
Nominal Voltage (V)	3/24V-DC
Outdoor Use	No

Product variants

Reference

Attributes

10mm



BCI10XB-2W