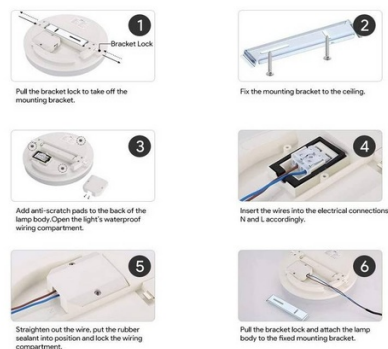




Installation method



2040LM 18W IP65 circular surface mounted LED ceiling light 2040LM 18W IP65

Ref. B1725-R-CCT

LED Surface Mounted CCT Circular Ceiling Light with 18W power, easy to install. Compact dimensions and high luminous efficiency with truly reduced consumption. Its IP65 rating makes it suitable for installation in bathrooms and damp areas, as well as in covered outdoor spaces, as it withstands moisture and splashes. Additionally, its waterproof rating prevents the entry of insects, dust, and dirt. 18W 230V 2040LM Ø280x50mm IP65



Product data

Beam angle (°)	120
Certs	CE, ROHS
Energy efficiency class	A+ (2021)
CRI	80-85
Dimensions (mm) LxWxH	Ø280x50
Dimmable	No
Driver	Internal
Efficiency (Lm/w)	106
Form	Circular
Frequency (Hz)	50 - 60
Frequency of Use	normal
Warranty	According to legal warranty: 3 years
IP	IP65
Kelvin (K)	3000, 4000, 6500
Material	Plastic
Material diffuser	Polycarbonate
Assembly	Surface
Orientable	No
Temperature range	-20°F ~ +40°F
Sensor	No
Nominal Voltage (V)	230
Type of LED	SMD 2835



Key	Warm white, Cold white, Neutral white
Outdoor Use	Yes
Recommended Use	Garden
Service life (h)	30000
Lumens (Lm)	1900

Product variants

Reference	Attributes
B1725-R-CCT	