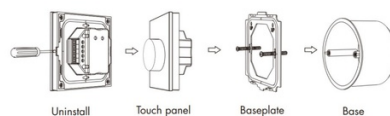


Installation diagram

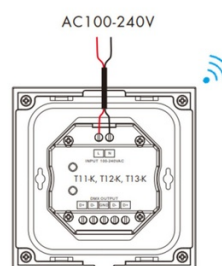


## DMX rotary controller - 1 zone - RGB

### Ref. SK-T13-K

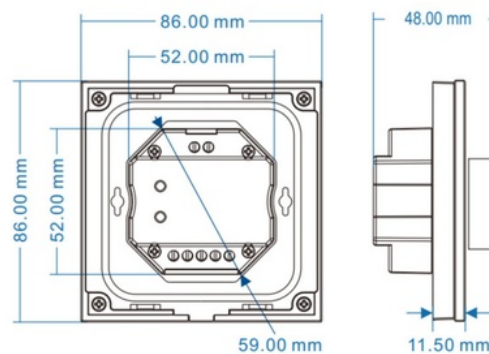
The 1-zone built-in control panel offers complete lighting control for 100-240V RGB LED fixtures. It can function as a DMX512 master or as a RF remote control. Its elegant glass interface features a wheel that allows for precise adjustment of color and brightness.

Wiring Diagram for rotary panel work as RF remote



### Product data

Certs	CE, ROHS
Connectivity	RF, DMX
Color control	RGB
Dimmable	Yes
Warranty	5 years
IP	IP20
Material	Crystal
Assembly	Recessed
Temperature range	-30°F ~ +55°F
Nominal Voltage (V)	100-240V
Outdoor Use	No



Product variants

Reference

Attributes

SK-T13-K

