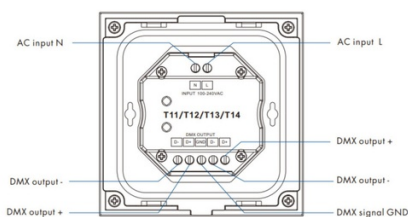




Mechanical Structures and Installations

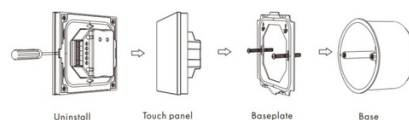


DMX touch control panel - 4 zones - RGB

Ref. SK-T13

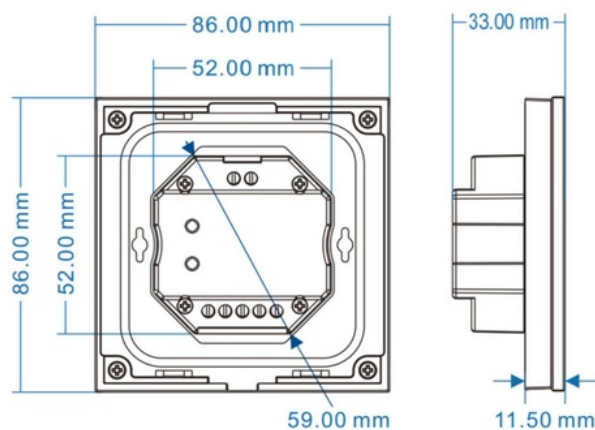
The 4-zone built-in DMX touch control panel offers complete lighting control for 100-240V RGB LED fixtures. It can function as a DMX512 master or as an RF remote control. Its elegant high-sensitivity glass touch interface includes a color wheel for precise adjustments, along with touch keys with LED indicators. It allows you to adjust brightness, saturation, speed in scenes, and dynamic modes, etc.

INSTALLATION DIAGRAM



Product data

Certs	CE, ROHS
Connectivity	RF, DMX
Color control	RGB
Dimensions (mm) LxWxH	86 x 86 x 33
Dimmable	Yes
Guarantee	5 years
IP	IP20
Material	Crystal
Assembly	Recessed
Net Weight (kg)	0.181 kg
Temperature range	-30°F ~ +55°F
Nominal Voltage (V)	100-240V
Outdoor Use	No



Product variants

Reference

Attributes

SK-T13

