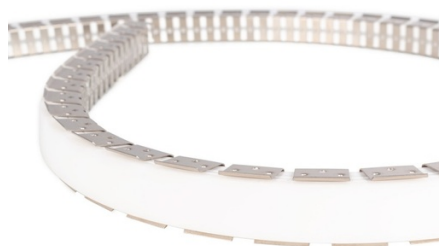


Aluminum flexible profile 16x16 mm for silicone sleeves - 2 meters

Ref. WOS1616-PERF

Steel profile for foundation/16mm silicone profile, FLEXIBLE AND MOLDABLE. It allows you to create desired contours and shapes such as spirals, waves, or circles. It is supplied in a 2-meter length. With dimensions of 16x16 mm, it is compatible with silicone cases with references WOS1616, WOS1616-N, and WOS1616-S. **Does not include silicone case**



Product data

Certs	CE, ROHS
Warranty	According to legal warranty: 3 years
Material	Steel



Product variants

Reference

Attributes



WOS1616-PERF