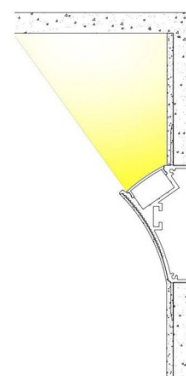


LED strip profile integration / trimless corner - 96 x 35mm - With diffuser - 2 meters

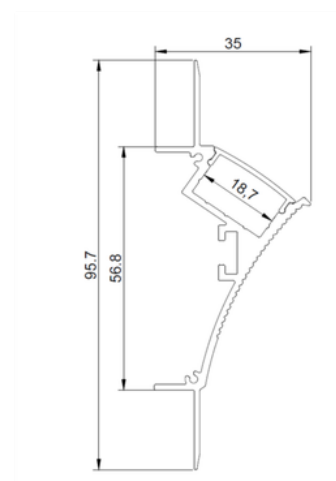
Ref. BPERFALP128

The aluminum profile integration, is installed near the ceiling within the depth of the plasterboard wall, illuminating upwards and creating indirect light on the ceiling; it can also be directed downwards or placed on the ceiling and wash towards the wall. It offers an innovative Trimless lighting solution with LED strips. It can be painted any color. Indirect light, glare-free, uniform. Ideal for placement on walls of stores, hotels, supermarkets, staircases, or any room in the home. They stand out for their installation on walls or ceilings with no visible aluminum frames, seams, or edges. 95.7x35mm Internal width: 18.7mm Length: 2m Material: Aluminum It can be painted in any color For flexible or rigid LED strips of <18mm



Product data

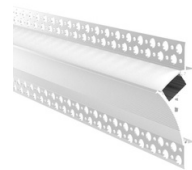
Certs	CE, ROHS
Guarantee	According to legal warranty: 3 years
Material	Aluminum
Assembly	Integration
Recommended Use	Corners



Product variants

Reference

Attributes



BPERFALP128