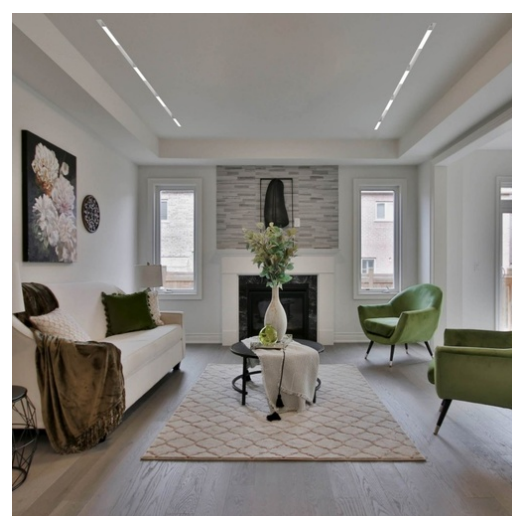




Linear opal LED opal luminaire for magnetic rail 48V - 10W - White

The 10W LED linear spotlight for magnetic track is a state-of-the-art luminaire with a modern design. It is ideal for general or ambient lighting, with a wide light beam angle (120°) and a polycarbonate diffuser that allows for even light distribution. Easy installation without tools, allowing for simple rearrangement and combination with other fixtures. It has a high color reproduction index (CRI>90), which means it displays colors with high fidelity. Available in black and in two shades: warm white and neutral white.



Product data

Housing color	White, Black
Light temperature	2700°K, 4000°K
Beam angle (°)	120
Certs	CE, ROHS
CRI	90-95
Warranty	According to legal warranty: 3 years
IP	IP20
Kelvin (K)	4000, 2800
Lumens (Lm)	300
Material	Aluminum
Material diffuser	Polycarbonate
Orientable	No
Power (W)	10
Nominal Voltage (V)	48V
Track Type	Magnetic
Key	Warm white, Neutral white

Outdoor Use	No
Dimensions (mm) LxWxH	305x25x23
Recommended Use	Hotels, Kitchens, Commerce, Living room

Product variants

Reference

Attributes

LM-300-B-BC

Housing color: White, Light temperature : 2700°K



LM-300-B-BN

Housing color: White, Light temperature : 4000°K



LM-300-N-BC

Housing color: Black, Light temperature : 2700°K



LM-300-N-BN

Housing color: Black, Light temperature : 4000°K

