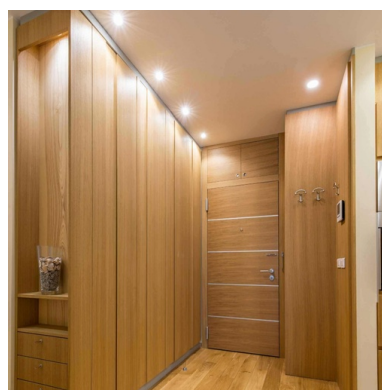


Round tilting downlight ring for GU10/MR16 bulb - Low UGR - Cutout Ø75 mm

Aro downlight made of orientable polycarbonate specifically designed to accommodate GU10/MR16 LED bulbs or modules. Its design allows light to be focused on the desired point, avoiding any type of glare, thus guaranteeing a maximum visual comfort (low UGR). This versatile recessed light can be used in both residential and commercial settings, whether in new construction or to replace existing fixtures. Available in 5 color combinations. ** Bulb not included**



Product data

Housing color	White and champagne (use), Black and champagne (use), Black and White (use), Pearl Gray and White (use), Pearl Gray and Black (use)
Cap	GU10
Certs	CE, ROHS
Dimensions (mm) LxWxH	Ø90x29
IP	IP20
Material	Polycarbonate
Assembly	Recessed
Orientable	Yes
Outdoor Use	No
Recommended Use	Dining room, Hotels, Kitchens, Commerce, Living room



Product variants

Reference

Attributes

B920-CB

Housing color: White and champagne (use)



B920-CN

Housing color: Black and champagne (use)



B920-GB

Housing color: Pearl Gray and White (use)



B920-GN

Housing color: Pearl Gray and Black (use)



B920-NB

Housing color: Black and White (use)

