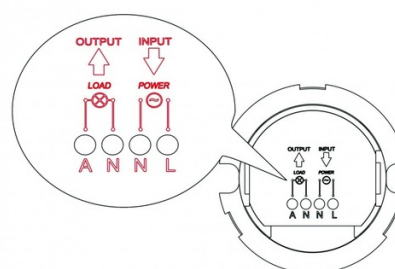


Connection-Wire Diagram

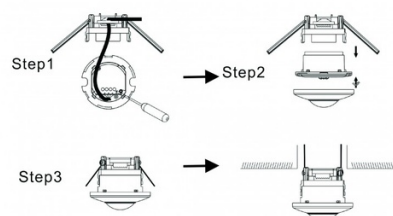


2 in 1 PIR motion sensor (surface/embeddable) - 360° - IP20

Ref. SP45

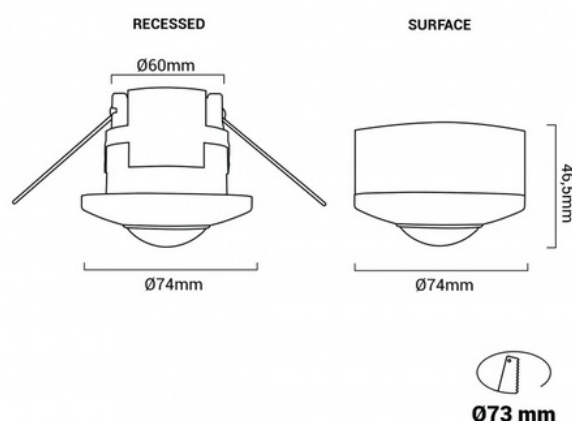
The 2 in 1 PIR motion sensor can detect movement within a coverage angle of 360°, a distance of 16 meters, and a height of 2.2 to 4 meters. Controls the on and off of one or more LED lights (up to 1000W total) achieving significant energy savings. It can be installed both on the surface and recessed. This sensor allows for the adjustment of various parameters such as range, light level, and time, to suit the user's needs.

Installation



Product data

Detection angle (°)	360
Certs	CE, ROHS
Dimensions (mm) LxWxH	Ø74x46.5
Cutting dimensions (mm)	Ø73
Frequency (Hz)	50 - 60
Guarantee	According to legal warranty: 3 years
IP	IP20
Assembly	Recessed, Surface
Detection range (m)	16
Temperature range	-20°F ~ +40°F
Nominal Voltage (V)	220 - 240 V AC
Outdoor Use	No
Recommended Use	Offices, Parking, Museums - Galleries



Product variants

Reference

Attributes

SP45

