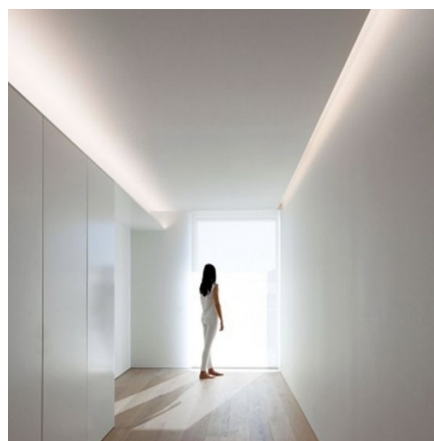


Aluminum profile for LED strip wall washer 66x120mm (2m)

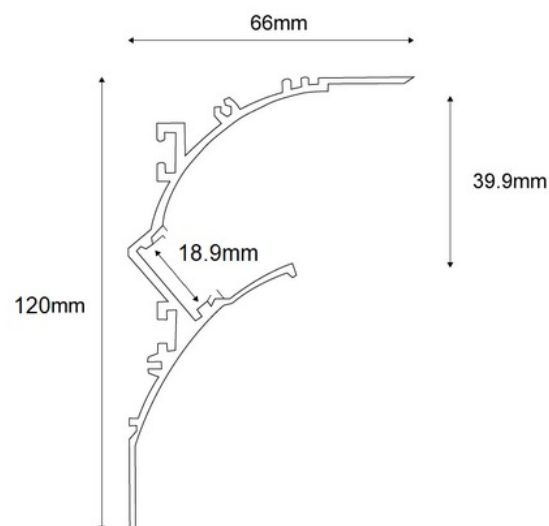
Ref. BPERFALP194

The 2m long aluminum profile for surfaces is a very useful wall bath for our LED strips if we intend to illuminate and highlight the ceiling of our homes. They look great, for example, in museums and art galleries, although they also serve perfectly to light our living spaces and create a minimalist and modern atmosphere. It can also be used as a decorative element or indirect lighting on blank walls. - Plugs and LED not included -



Product data

Certs	CE, ROHS
Dimensions (mm) LxWxH	66x120mm
Guarantee	According to legal warranty: 3 years
IP	IP20
Material	Aluminum
Assembly	Integration
Outdoor Use	No
Recommended Use	Corners



Product variants

Reference

Attributes

BPERFALP194

