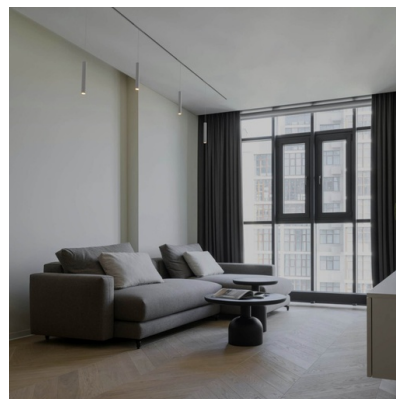


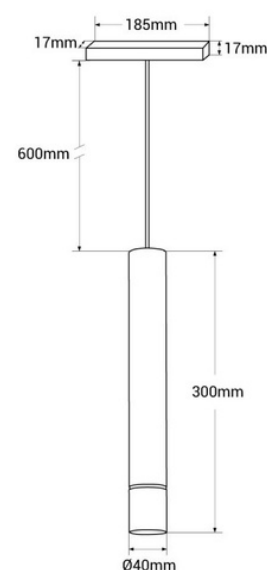
Magnetic track LED spotlight - 48V - 8W - White

Our LED suspension spotlight for magnetic track is a state-of-the-art fixture with a modern design. Provides accent lighting with a low glare index (UGR16) and a high color rendering index (CRI>90). Its installation is very simple and does not require the use of tools, which offers great versatility as it can be combined with other fixtures and easily rearranged on the track. It operates at only 48V, therefore, it is safe for children and pets. Available in warm white (2800K) and neutral white (4000K)




Product data

Housing color	White (use), Black (use)
Light temperature	4000°K (use), 2800°K (use)
Opening angle (°)	38
Certs	CE, ROHS
CRI	90-95
IP	IP20
Kelvin (K)	3000, 4000, 2800
Lumens (Lm)	460
Assembly	Suspension
Power (W)	8
Nominal Voltage (V)	48V
Track Type	Magnetic
Key	Warm white, Neutral white
Outdoor Use	No
Recommended Use	Dining room, Bedrooms, Hotels, Kitchens, Commerce, Restaurants, Living room
Service life (h)	25,000
Dimensions (mm) LxWxH	light: Ø40 x 300mm / cable: 600mm
Guarantee	According to legal warranty: 3 years
UGR	UGR16



Product variants

Reference	Attributes	
LCM-8W-B-BC	Housing color: White (use), Light temperature : 2800°K (use)	
LCM-8W-B-BN	Housing color: White (use), Light temperature : 4000°K (use)	
LCM-8W-N-BC	Housing color: Black (use), Light temperature : 2800°K (use)	
LCM-8W-N-BN	Housing color: Black (use), Light temperature : 4000°K (use)	