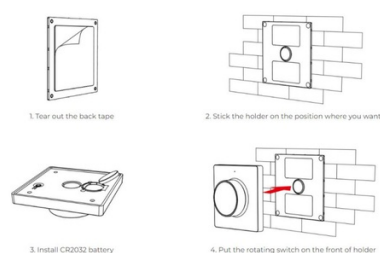




RF Rotary Controller - Single Color + CCT - Magnetic Base - Mi Light - Black

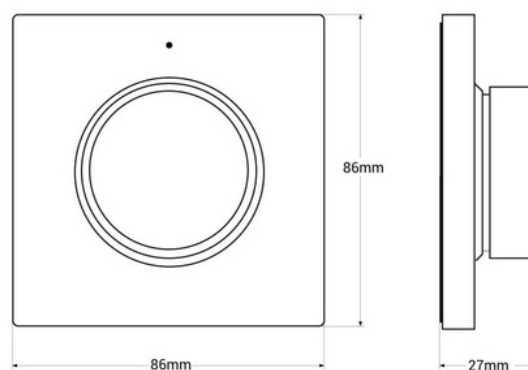
The RF control panel provides a simple and intuitive control for Miboxer/Milight 2.4G monochrome and CCT LED fixtures. It is installed magnetically on a bracket that is fixed to the wall. Through a wheel, it allows for precise adjustment of brightness and color temperature. Available in white color.

INSTALLATION INSTRUCTIONS





Product data

| | |
|-----------------------|--------------------------------------|
| Housing color | White, Black |
| Certs | CE, ROHS |
| Connectivity | RF |
| Color control | Monochrome, CCT |
| Dimensions (mm) LxWxH | 86 x 86 x 27 |
| Dimmable | Yes |
| Control distance | 30 minutes |
| Warranty | According to legal warranty: 3 years |
| IP | IP20 |
| Material | Polycarbonate, Crystal |
| Assembly | Surface |
| Temperature range | -10~40°F |
| Nominal Voltage (V) | 100-240V |
| Outdoor Use | No |



Product variants

| Reference | Attributes | |
|-----------|----------------------|---|
| K1 | Housing color: White |  |
| K1B | Housing color: Black |  |